

Transflex® B7 - B75

Structural expansion joints

Designed to accommodate movements in all directions, longitudinal, transversal and vertical, of overhead structures with minimum load transmission to decks or slabs. These joints provide maximum traffic comfort and durability.

Both models are supplied in 1.75m modules to be anchored to the deck or slab, using chemically fixed anchors.

Movement is absorbed by deformation of a strong central membrane. Impact loads are absorbed by the elastomer and are not directly transmitted to the

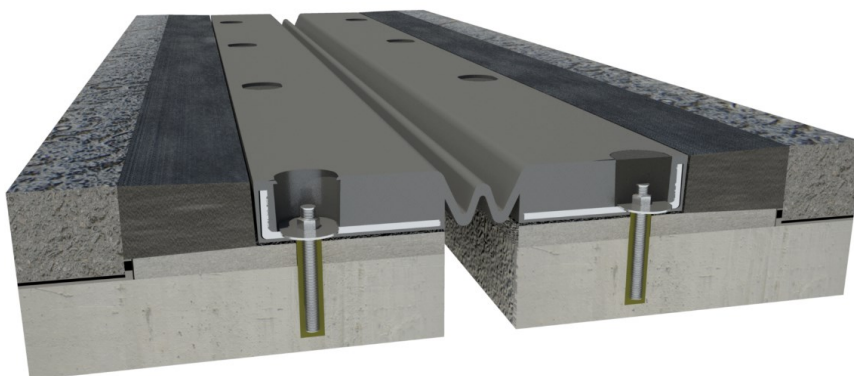
Transflex® models B7 y B75 have been specially designed to absorb vertical movements, and cover a movement range of 50mm and 75mm, respectively.

Please, contact us at: expandite@trelleborg.com

Waterproofing:

In urban car parks and bridges waterproofing joints are recommended. This is achieved by inserting a continuous membrane for channeling the water, paying particular attention to areas with walls and junctions.

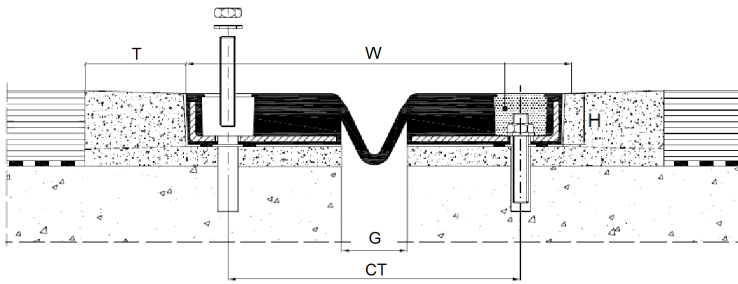
Expansion Joint Transflex® B-75



Main applications:

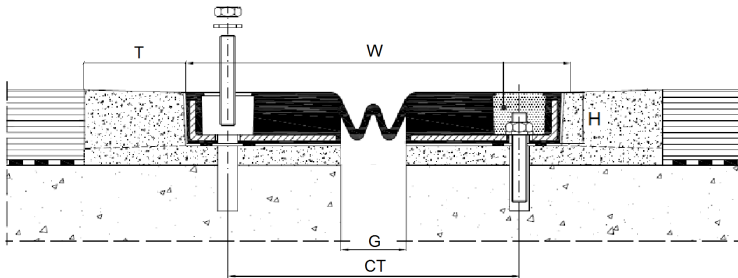
- ◆ Logitudinal joints in bridge decks
- ◆ Overhead pedestrian bridges
- ◆ Multi-storey car parks

Transflex® Expansion Joint B-7



Movement						
50 mm						
Dimensions (mm)						
L	H	W	CT	G _{min.}	G _{max.}	T
1750	34	209	148	25	40	70

Transflex® Expansion Joint B-75



Movement						
75 mm						
Dimensions (mm)						
L	H	W	CT	G _{min.}	G _{max.}	T
1750	35	220	162	35	50	70

TECHNICAL DATA:

Elastomer properties	Value	Test method
Hardness	55±5 Shore A	ASTM D2240
Tensile strength	> 135 kgs/cm ²	ASTM D412
Elongation at break	> 450%	ASTM D412 / NFT46002
Rubber-steel adhesion	11,8 min N/mm	ASTM D429 Method B
Low temperature resistance	-30°C	ASTM D2137
Ozone resistance	No cracks	ASTM D1149 Method B 25 ppcm (48 hours at 38 °C)
Compression set	30% max def	ASTM D395 Method B (24 hours at 70 °C)
Thermal aging	<15 Shore A -25% Tensile strength -40% Elongation at break	ASTM D573 hot air (70 hours at 70 °C)
Resilience	50%	DIN 53512

Metal component:

Steel fabricated acc. ASTM Type A572 S355

Notes:

- We strive to provide reliable technical information of our products. Recommendations or advice on their use have been made in good faith based on our experience. However, it is the user or designer responsibility to ensure that each product satisfies the intended purpose and conditions for use are adequate.
- Values stated in this datasheet correspond to mean laboratory test results and are only indicative.
- Whilst all reasonable care is taking in compiling technical data on the company's products, some changes might take place or some figures might be wrong with no responsibility for Trelleborg IZARRA. Also all recommendations or suggestions regarding the use of any products are made without guarantee since the conditions of use are beyond the control of the company. It is the customer's responsibility to satisfy himself that each product is fit for the purpose for which he intends to use it and hat the actual conditions of use are suitable.



Trelleborg Izarra, S.A.

C/Sierra de Algodonales, 12-14, - 28500 Arganda del Rey (Madrid) - Spain

Tel.: +34 91 870 17 00 - Fax: +34 91 870 34 65 - expandite@trelleborg.com - www.trelleborg.com/transflex