



Circular SAW Mount



Circular SAW mountings

The metal interleaf incorporated in the design provides a higher compression to shear stiffness ratio, thereby increasing the load capacity in the compression or combined compression and shear modes.

The 17-1780 engine mounting features a void in the rubber section to allow the use of a central snubber device.

Used in a variety of industrial applications including vibratory rollers and small screens and for the suspension of smaller engines.

17-1780 can be fitted with a rebound washer for mobile applications.

About Trelleborg Industrial AVS

Over 100 years of experience as Metalastik and Novibra, today Trelleborg Industrial AVS make improvements people can physically feel. From smoother travel to quieter, more efficient machines, we make life feel better. With quality, testing and compliance built in, we're in it for the long haul, ensuring your solution still works, over an extended and often arduous life-cycle.

With three state-of-the-art manufacturing plants across the globe, our experience in rubber to metal bonding enhances several industries, including off-highway vehicles, rail and mass transit, marine and energy and general industry.

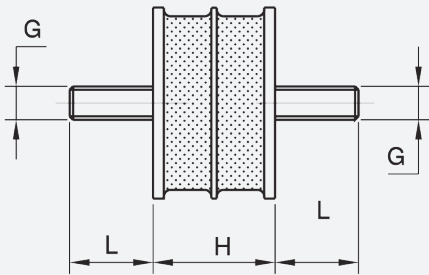
We offer an end-to-end service, to take you from concept through design, manufacturing and testing to delivery. This reduces the complexity of supply, helping you cut costs, mitigate risk and receive on time, on budget delivery.

Trelleborg IAVS is part of Trelleborg Group, which employs 15,000 people in over 40 countries. Whatever your challenge, whatever your role and wherever you are, we are nearby to offer expert knowledge and quality solutions.

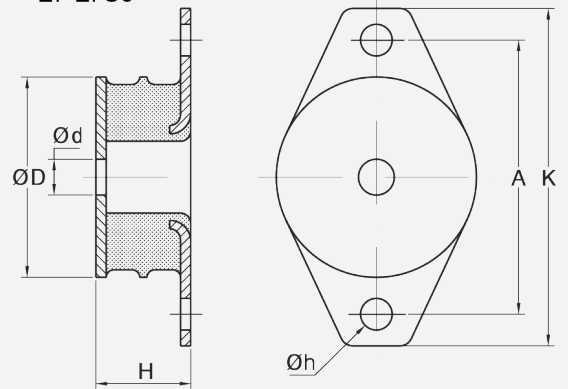
Circular SAW Mount

Technical Drawing

17-1392



17-1780



Product Data

DRAWING NO.	PART NO.	DIMENSIONS IN MM								MAX LOAD COMPRESSION (KG)	MAX LOAD SHEAR (KG)	WEIGHT (KG)
		D	H	L	G	A	K	d	h			
17-1392	10-00492	57	37	25	M10					120	90	0.28
17-1392	10-00493	57	37	25	M10					250	90	0.28
17-1392	10-00494	57	37	25	M10					330	90	0.28
17-1780	20-02536	95	45			130	160	17	15	190	135	0.81
17-1780	20-02848	95	45			130	160	17	15	380	160	0.81



WWW.TRELLEBORG.COM/ANTI-VIBRATION-SOLUTIONS

For further information visit our website or e-mail industrialavs@trelleborg.com

The content in this datasheet was correct at the time of printing, but is subject to change without notice.