



MDS Mount



MDS Mounting

The MDS mounting is easy to install based on a 2 part single bolt installation. There is no requirement for radius or chamfered installation hole and a steel flange prevents rubber wear at the bracket interface. The bonded steel snubbing cup limits vertical movements and prevents excessive strain in rubber. The cup is encapsulated in rubber to prevent corrosion.

A rubber rim holds the lower mount half in the hole during assembly.

- Vertical dynamic snubbing +/- 6 mm.
- Horizontal dynamic snubbing +/- 3 mm.
- Static vertical load range 70-200 kg.
- Deflection at max static load 2.5 mm.
- Axial to radial stiffness ratio 1.5:1

The MDS mounting is designed to take high dynamic shock loads but to limit mount movements in all directions, MDS= Multi Directional Snubbing.

In the static working load range, the MDS mounts have linear stiffness characteristics allowing easy prediction of mount deflection and isolation performance. (see fig. 1)

Typical applications: Engines and small cabs on off-highway vehicles.

About Trelleborg Industrial AVS

Over 100 years of experience as Metalastik and Novibra, today Trelleborg Industrial AVS make improvements people can physically feel. From smoother travel to quieter, more efficient machines, we make life feel better. With quality, testing and compliance built in, we're in it for the long haul, ensuring your solution still works, over an extended and often arduous life-cycle.

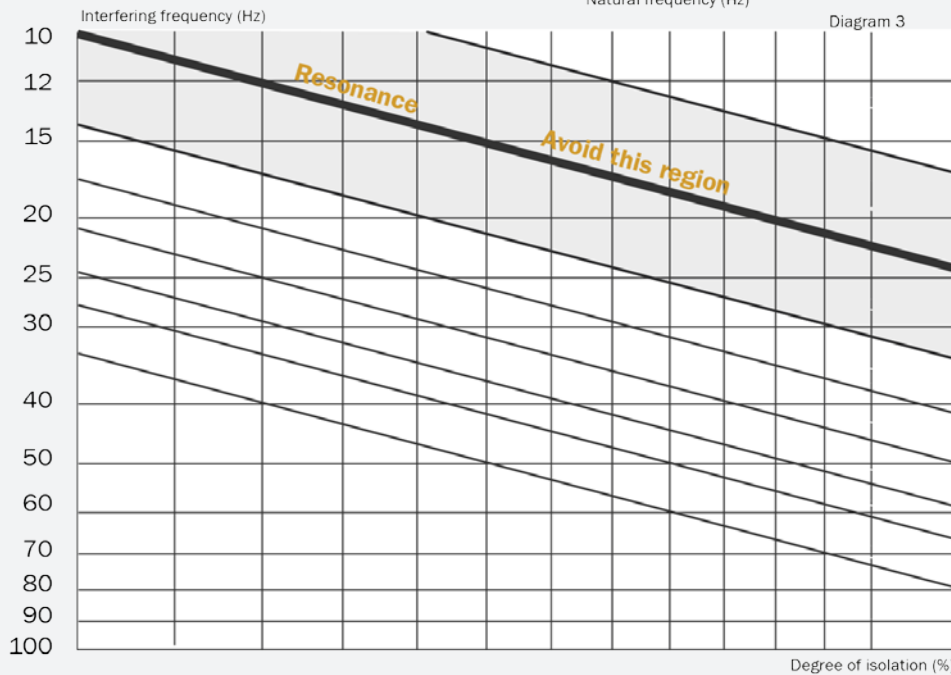
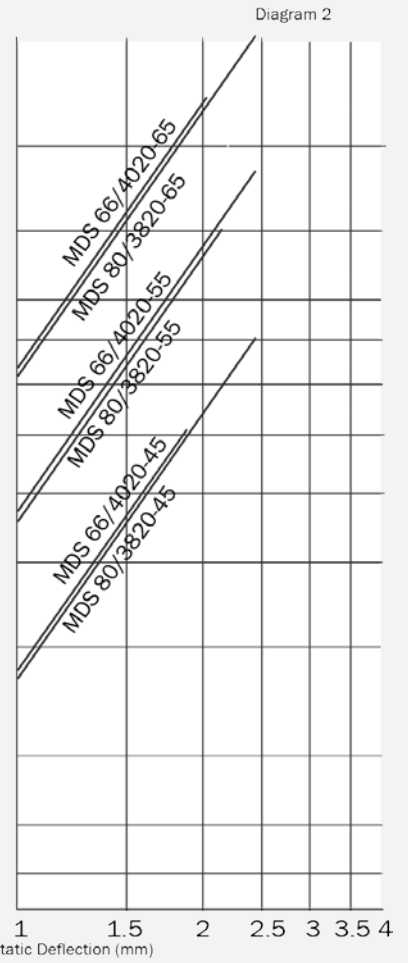
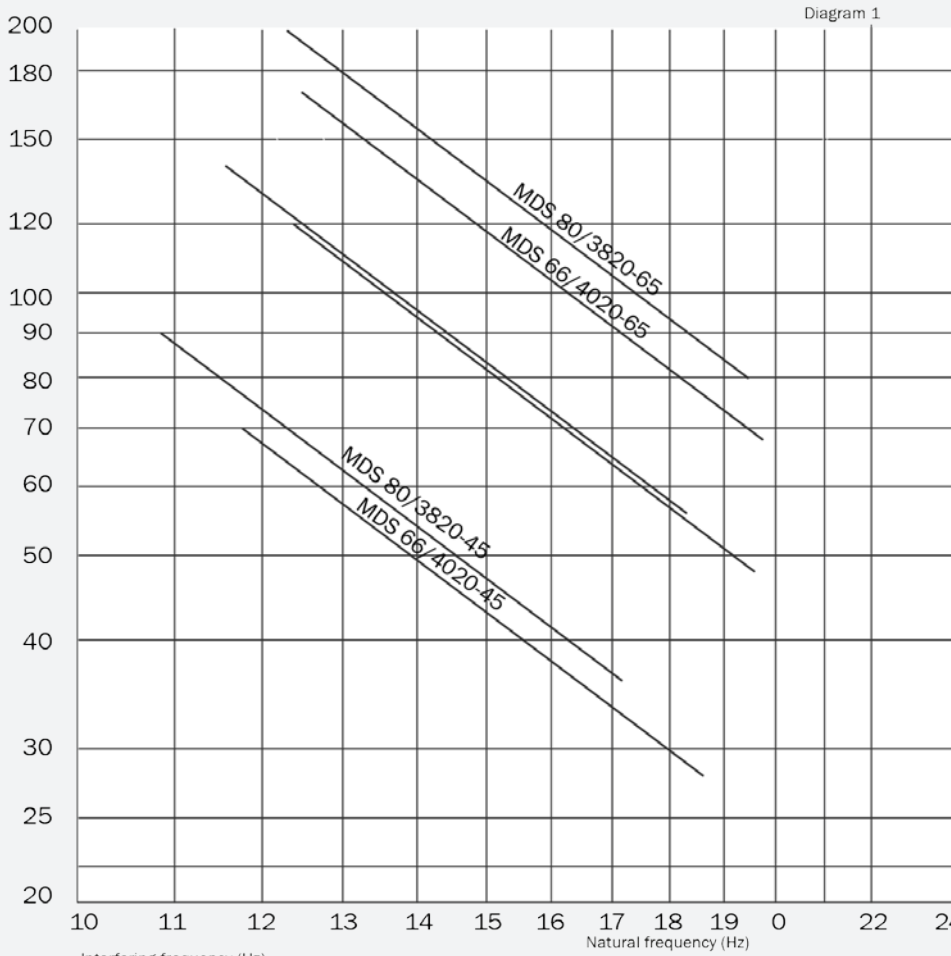
With three state-of-the-art manufacturing plants across the globe, our experience in rubber to metal bonding enhances several industries, including off-highway vehicles, rail and mass transit, marine and energy and general industry.

We offer an end-to-end service, to take you from concept through design, manufacturing and testing to delivery. This reduces the complexity of supply, helping you cut costs, mitigate risk and receive on time, on budget delivery.

Trelleborg IAVS is part of Trelleborg Group, which employs 15,000 people in over 40 countries. Whatever your challenge, whatever your role and wherever you are, we are nearby to offer expert knowledge and quality solutions.



Load per mounting (kg)



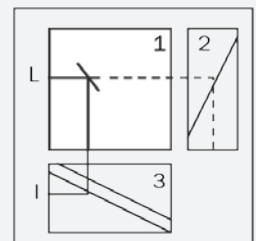
To select the correct mounting, the following data is needed:

1. Load per mounting (kg)
2. Interfering frequency (Hz) ($\text{Hz} = \text{rpm}/60$)

Select correct load line in diagram 1 and correct interface line in diagram 3. The load line intersects with required type of mounting.

Connect this intersection point vertically down to the interference line on diagram 3. Here, on the sloping curve, the isolation degree is indicated.

For static deflection see diagram 2.

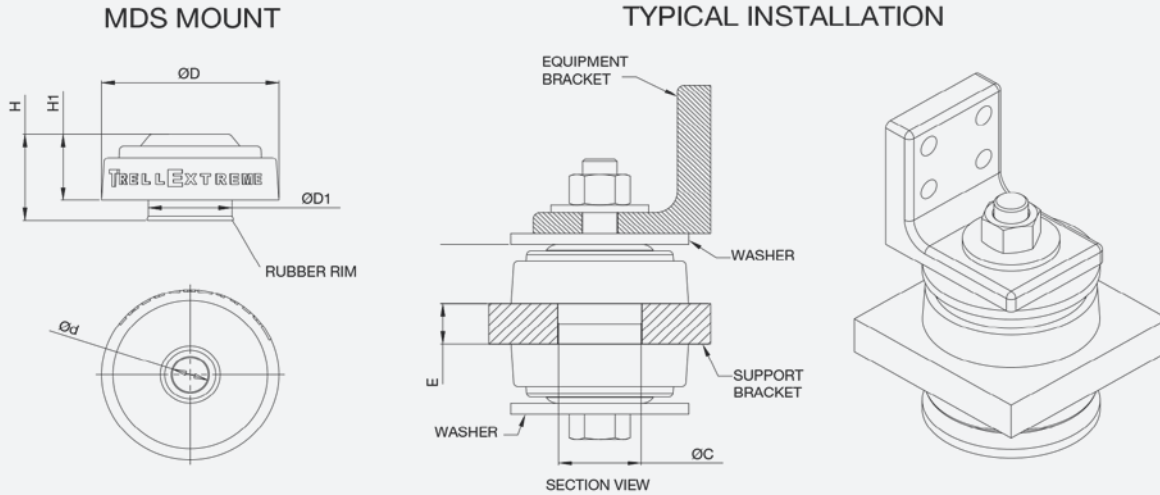


Note: The natural frequencies and degrees of isolation are based on dynamic characteristics of the mounting



MDS Mounting

Technical Drawing



Product Data

DRAWING No.	PART No.	TYPE	DIMENSIONS (mm)								MAX LOAD (kg)	AXIAL STIFFNESS (N/mm)	BOLT SIZE	MAX BOLT TORQUE (Nm)	WEIGHT (kg)
			d	D	D1	H	H1	C	E (+/- 0/5MM)	F*					
17-4967	10-02183	MDS 55-45	13	55.5	29.8	22	29	28.8-30.2	15	26.5	40	186	M12	125	0.1
17-4967	10-04797	MDS 55-55	13	55.5	29.8	22	29	28.8-30.2	15	26.5	65	300	M12	125	0.1
17-4967	10-04817	MDS 55-65	13	55.5	29.8	22	29	28.8-30.2	15	26.5	95	450	M12	125	0.1
17-2280	10-01802	MDS 66-45	18.8	66	39.8	39	29.5	40.0-40.3	19.5	35	70	320	M16	240	0.18
17-2280	10-01803	MDS 66-55	18.8	66	39.8	39	29.5	40.0-40.3	19.5	35	120	540	M16	240	0.18
17-2280	10-01804	MDS 66-65	18.8	66	39.8	39	29.5	40.0-40.3	19.5	35	170	800	M16	240	0.18
17-2243	10-01799	MDS 80-45	16.2	80	37.8	41.5	32	37.9-38.2	19.5	37.5	90	350	M16	240	0.26
17-2243	10-01800	MDS 80-55	16.2	80	37.8	41.5	32	37.9-38.2	19.5	37.5	140	550	M16	240	0.26
17-2243	10-01801	MDS 80-65	16.2	80	37.8	41.5	32	37.9-38.2	19.5	37.5	200	800	M16	240	0.26
17-2241	10-03705	MDS85-45	16.2	88	41.8	40	32	42.0-42.3	16	35	90	400	M16	240	0.34
17-2241	10-02176	MDS85-55	16.2	88	41.8	40	32	42.0-42.3	16	35	140	700	M16	240	0.34
17-2241	10-04818	MDS85-65	16.2	88	41.8	40	32	42.0-42.3	16	35	200	1065	M16	240	0.34
17-4474	10-04816	MDS95-45	16.2	98	46.6	40	32	47.5-48.3	16	35	190	580	M16	333	0.41
17-4474	10-02256	MDS95-55	16.2	98	46.6	40	32	47.5-48.3	16	35	240	745	M16	333	0.41
17-4474	10-02255	MDS95-65	16.2	98	46.6	40	32	47.5-48.3	16	35	370	1135	M16	333	0.41
17-2285	10-03853	MDS 110-45	22.5	110	56.9	51.5	39	57.2-57.5	25	46.5	230	724	M20/M22	502/685	0.74
17-2285	10-03854	MDS 110-55	22.5	110	56.9	51.5	39	57.2-57.5	25	46.5	360	976	M20/M22	502/685	0.74
17-2285	10-03855	MDS 110-65	22.5	110	56.9	51.5	39	57.2-57.5	25	46.5	510	1382	M20/M22	502/685	0.74
17-4196	10-01984	MDS 130-45	30.2	128	69.2	58	43	70.75-71.25	40	57	230	700	M30	750	1.22
17-4196	10-01985	MDS 130-55	30.2	128	69.2	58	43	70.75-71.25	40	57	500	1160	M30	750	1.22
17-4196	10-01986	MDS 130-65	30.2	128	69.2	58	43	70.75-71.25	40	57	600	1600	M30	750	1.22



WWW.TRELLEBORG.COM/ANTI-VIBRATION-SOLUTIONS

For further information visit our website or e-mail industrialavs@trelleborg.com

The content in this datasheet was correct at the time of printing, but is subject to change without notice.