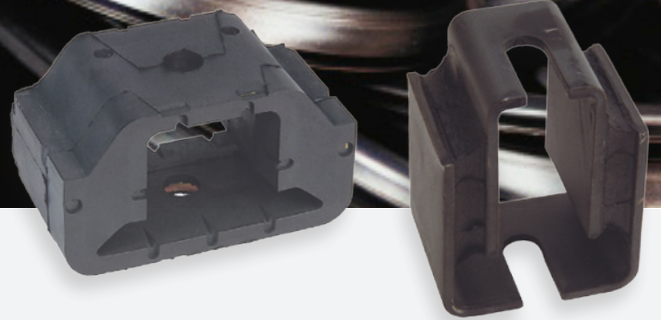




BA and Double U-Shear



BA and Double U-Shear

Novibra type BA and Metalastik type Double U-Shear are equally suitable for isolating vibrations from low speed machines and equipment, protecting sensitive and light weight units from external shocks and vibrations.

The mountings utilize bonded rubber in shear to permit relatively high deflections, providing excellent isolation of low frequencies. (Type BA 20/2 is a half section suitable for very light loads). On rotating equipment applications the soft axis should be at right angles to the shaft. On mobile applications the stiff axis should be aligned in the direction of travel. For transit case applications the mountings need to be arranged so that the horizontal stiffness is the same in all directions.

Typical applications include:

- Light fans and compressors
- Portable gensets and pumps
- Computers and electronic units
- Transit cases
- Measuring and test equipment
- Gauging equipment

About Trelleborg Industrial AVS

Over 100 years of experience as Metalastik and Novibra, today Trelleborg Industrial AVS make improvements people can physically feel. From smoother travel to quieter, more efficient machines, we make life feel better. With quality, testing and compliance built in, we're in it for the long haul, ensuring your solution still works, over an extended and often arduous life-cycle.

With three state-of-the-art manufacturing plants across the globe, our experience in rubber to metal bonding enhances several industries, including off-highway vehicles, rail and mass transit, marine and energy and general industry.

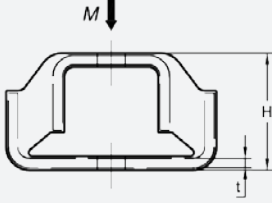
We offer an end-to-end service, to take you from concept through design, manufacturing and testing to delivery. This reduces the complexity of supply, helping you cut costs, mitigate risk and receive on time, on budget delivery.

Trelleborg IAVS is part of Trelleborg Group, which employs 15,000 people in over 40 countries. Whatever your challenge, whatever your role and wherever you are, we are nearby to offer expert knowledge and quality solutions.

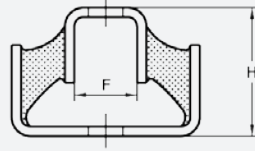
BA and Double U-Shear

Technical Drawing

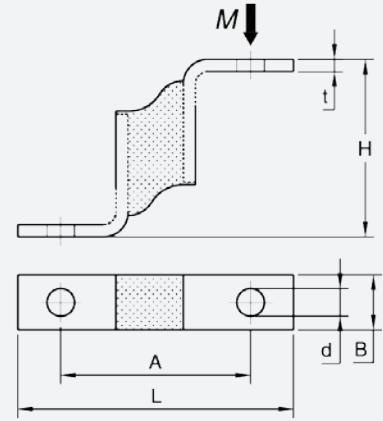
BA 20 - BA 100



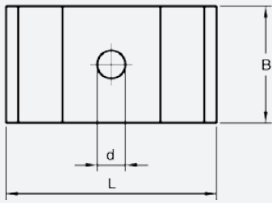
17-1492, 17-1480, 17-1479, 17-1482



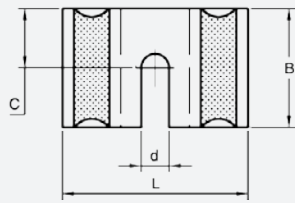
BA 20/2



BA 20 - BA 100, 17-1482



17-1492, 17-1480, 17-1479



Product Data

DRAWING No.	PART No.	TYPE	DIMENSIONS (mm)								MAX LOAD (kg)	WEIGHT (kg)	
			B	L	H	A	F	C	d	t			
BA													
17-4345	10-00005	BA 20/2 40 IRH	20	90	58	62	-	-	-	8	4	12	0.09
17-4345	10-00006	BA 20/2 60 IRH	20	90	58	62	-	-	-	8	4	27	0.09
17-4035	10-00145	BA 20 40 IRH	20	90	50	-	-	-	-	10	4	20	0.16
17-4035	10-00146	BA 20 60 IRH	20	90	50	-	-	-	-	10	4	35	0.16
17-4036	10-00147	BA 50 40 IRH	50	90	50	-	-	-	-	12	4	60	0.42
17-4036	10-00148	BA 50 60 IRH	50	90	50	-	-	-	-	12	4	110	0.42
17-4037	10-00149	BA 100 40 IRH	100	90	50	-	-	-	-	15	4	130	0.83
17-4037	10-00150	BA 100 60 IRH	100	90	50	-	-	-	-	15	4	250	0.83
DOUBLE U-SHEAR													
17-1492	10-00518	40 IRH	19	60	43	-	19	10.3	6.7	3	14	0.09	
17-1492	10-00519	50 IRH	19	60	43	-	19	10.3	6.7	3	20	0.09	
17-1482	10-00515	40 IRH	51	60	41	-	20	25	11	3	37	0.2	
17-1482	10-00516	50 IRH	51	60	41	-	20	25	11	3	56	0.2	
17-1480	10-00511	40 IRH	51	80	78	-	32	25	13	5	70	0.6	
17-1480	10-00512	50 IRH	51	80	78	-	32	25	13	5	100	0.6	
17-1479	10-00509	40 IRH	64	86	108	-	38	32	16.7	5	150	1.1	
17-1479	10-00510	50 IRH	64	86	108	-	38	32	16.7	5	220	1.1	